



Doctor Discussion Guide



INDICATION

CINRYZE® (C1 esterase inhibitor [human]) is an injectable prescription medicine that is used to help prevent swelling and/or painful attacks in children (6 years of age and older), teenagers and adults with Hereditary Angioedema (HAE).

IMPORTANT SAFETY INFORMATION

You should not use CINRYZE if you have had life-threatening immediate hypersensitivity reactions, including anaphylaxis, to the product.

For additional safety information, please click [here](#) for Full Prescribing Information and discuss with your doctor.



Give this page to your doctor

It can help guide your conversation and determine whether you should be tested for hereditary angioedema (HAE).

HAE is a rare, potentially life-threatening genetic disorder that causes recurrent episodes of swelling anywhere in the body and/or attacks of abdominal pain. Because HAE is rare, misdiagnosis and delays in diagnosis are common.

For healthcare professionals

When to suspect HAE:

- Recurrent angioedema without urticaria and/or pruritus
- HAE-positive family history (present in 75% of patient population)
- Onset of symptoms in childhood/adolescence
- Recurrent abdominal pain attacks
- Occurrence of laryngeal edema
- Failure to respond to treatment with antihistamines, glucocorticoids and/or epinephrine
- Prodromal signs or symptoms before swellings

IMPORTANT SAFETY INFORMATION

Tell your healthcare provider about all of your medical conditions, including if you

- have an indwelling catheter/access device in one of your veins.
- have a history of blood clots, heart disease, or stroke.
- are taking birth control pills or androgens.
- are pregnant or planning to become pregnant. It is not known if CINRYZE can harm your unborn baby.
- are breastfeeding or plan to breastfeed. It is not known if CINRYZE passes into your milk and if it can harm your baby.

For additional safety information, please click [here](#) for Full Prescribing Information and discuss with your doctor.



For more information on preventive treatment with CINRYZE, visit [CINRYZE.com/HCP](https://www.cinryze.com/HCP)



Other considerations

- ✓ Laryngeal attacks are life threatening because of the potential for asphyxiation
- ✓ Abdominal attacks may present with symptoms similar to appendicitis or irritable bowel syndrome
- ✓ In a 2010 survey of 313 patients, 19 to 24% of people with HAE have undergone an unnecessary surgical procedure prior to being diagnosed
- ✓ Untreated attacks typically last two to five days
- ✓ Attacks often occur without warning but may be traced to specific triggers

Confirming the diagnosis

The only way to confirm an HAE diagnosis is with a lab test. Patients should have serum levels of C4 measured, because levels are invariably low (C4 <30% of mean normal level) in patients with HAE who have not yet been treated. When these values are low, antigenic C1-INH levels should be tested.

IMPORTANT SAFETY INFORMATION

Allergic reactions may occur with CINRYZE. Call your healthcare provider or get emergency support services right away if you have any of the following symptoms:

- **wheezing**
- **difficulty breathing**
- **chest tightness**
- **turning blue (look at lips and gums)**
- **fast heartbeat**
- **swelling of the face**
- **faintness**
- **rash**
- **hives**

Serious blood clots may occur with CINRYZE. Call your healthcare provider or get emergency support services right away if you have any of the following symptoms:

- pain and/or swelling of an arm or leg with warmth over the affected area
- discoloration of an arm or leg
- unexplained shortness of breath
- chest pain or discomfort that worsens on deep breathing
- unexplained rapid heart rate
- numbness or weakness on one side of the body

For additional safety information, please click [here](#) for Full Prescribing Information and discuss with your doctor.

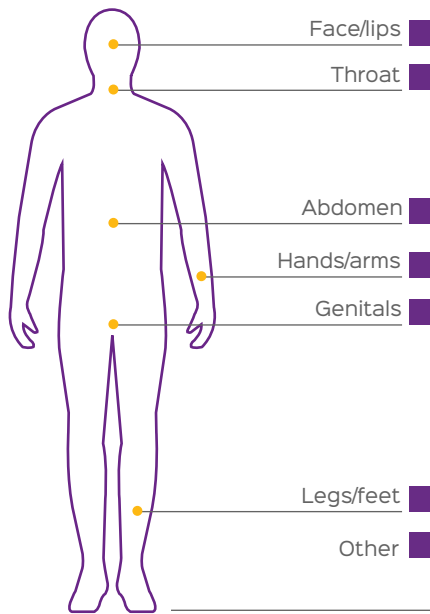


Doctor discussion guide

Do you experience uncomfortable or painful episodes of swelling? Yes No



Affected areas



Symptoms

Skin

Itchiness Yes No

Hives Yes No

Abdomen

Abdominal pain Yes No

Diarrhea Yes No

Nausea Yes No

Vomiting Yes No

Other: _____

Throat

Difficulty swallowing Yes No

Difficulty breathing Yes No

Voice changes Yes No

IMPORTANT SAFETY INFORMATION

Because CINRYZE is made from human blood, it may carry a risk of transmitting infectious agents, e.g., viruses and, theoretically, the Creutzfeldt-Jakob disease (CJD) agent.

For additional safety information, please click [here](#) for Full Prescribing Information and discuss with your doctor.



My episodes

Relieved with antihistamines/corticosteroids Yes No

Duration of swelling and/or pain

Early symptoms

Triggers



My history

Positive family history Yes No

Symptom onset

ER visits past 12 months

Ineffective surgery Yes No

Current medications

The most common side effects seen with CINRYZE were headache, nausea, rash, and vomiting. These are not all the possible side effects of CINRYZE. Tell your healthcare provider about any side effect that bothers you or that does not go away. You are encouraged to report negative side effects of prescription drugs to the FDA. Visit www.fda.gov/medwatch, or call 1-800-FDA-1088.

For additional safety information, please click [here](#) for Full Prescribing Information and discuss with your doctor.

You are encouraged to report negative side effects of prescription drugs to the FDA. Visit www.fda.gov/medwatch, or call 1-800-FDA-1088.

TM or © items and the associated logos are trademarks or registered trademarks of Shire or its affiliates.

© 2018 Shire US Inc., Lexington, MA 02421 1-800-828-2088

All rights reserved. SHIRE and the Shire Logo are trademarks or registered trademarks of Shire Pharmaceutical Holdings Ireland Limited or its affiliates.